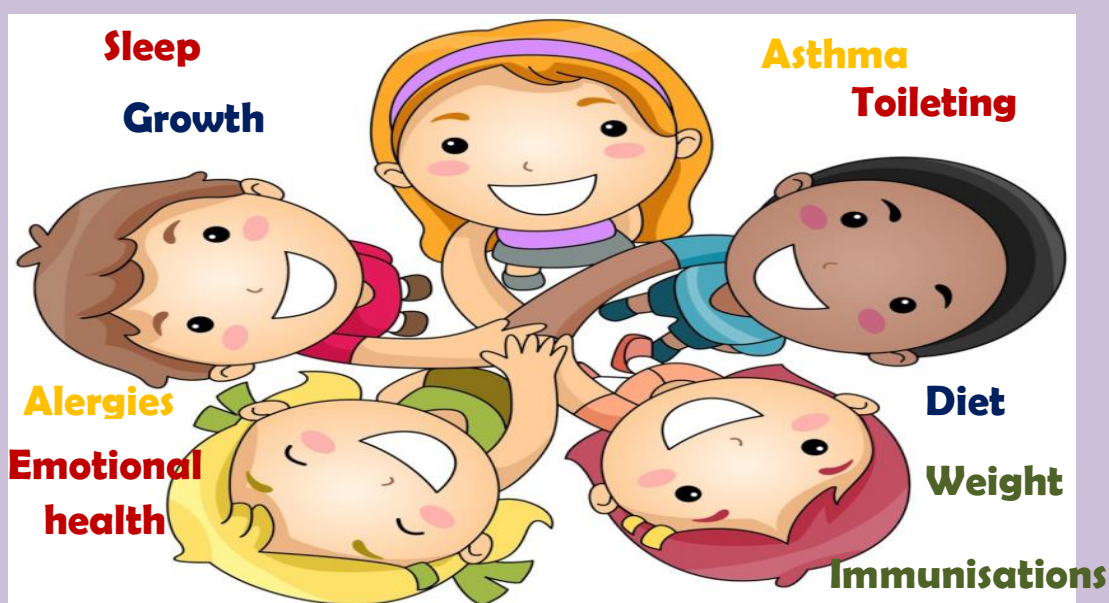


# Your School Nursing Service

Someone you know and can trust to discuss your child's health



We can also offer support and advice if your child has disabilities, long term illness or other health needs.

If we can't provide the help ourselves, we will connect you with someone who can.

## How can I access my School Nurse?

Appointments available with our school nurse - Nicky Lambe, between

**9.15am – 11.00am**

**Tuesday 21<sup>st</sup> January, Tuesday 3<sup>rd</sup>**

**March & Tuesday 31st March**

*Call the office on 02392 734787 or ask at reception to book a 15 min slot. Nicky will also be available at our next Well-being event on Tuesday 14th January between 2-3pm.*

Email: [SNHS.portsmouthschoolnursingservice@nhs.net](mailto:SNHS.portsmouthschoolnursingservice@nhs.net)

Telephone 0300 123 6629